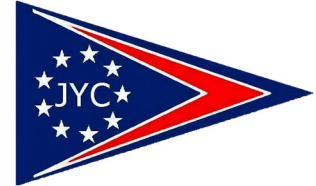




EST. 1960

JACKSON YACHT CLUB
(Organizing Authority)

SAILING INSTRUCTIONS
2023 Sunday Series



1. RULES

1.1 The series will be governed by the rules as defined in the Racing Rules of Sailing (RRS) and these Sailing Instructions.

2. NOTICES TO COMPETITORS

2.1 Notices to competitors will be published in the weekly JYC Sailing Newsletter.

3. CHANGES TO SAILING INSTRUCTIONS

3.1 Written changes to the sailing instructions will be posted on the door to the race committee room no less than 1 hour prior to the scheduled start of the first race to which the changes apply.

3.2 Changes to the sailing instructions may be given orally on the water. Oral instruction shall be communicated to each boat before her warning signal after the Race Committee has displayed code flag L with one sound.

4. SIGNALS MADE ASHORE

4.1 Drop Mark Courses (Attachment A & B)

4.1.2 Signals made ashore will be displayed on the yardarm of the club mast or from the east end of the clubhouse upper deck.

4.1.2 When code flag AP is displayed ashore, "1 minute" is replaced with "not less than 45 minutes" in the race signal AP.

4.2 Fixed Mark Courses (Attachment C)

4.2.1 All signals will be made ashore and will be displayed on the balcony railing of the clubhouse at the east end of the balcony.

4.2.2 The following signals, representing the fixed Channel Markers indicated on the chart found in Attachment C will be used:

Channel Marker "A" – A RED banner bearing the letter "A"

Channel Marker "B" – A BLUE banner bearing the letter "B"

Channel Marker "C" – A YELLOW banner bearing the letter "C"

Channel Marker "D" – A GREEN banner bearing the letter "D"

Channel Marker "E" – A PINK banner bearing the letter "E"

Channel Marker "M" – A WHITE banner bearing the letter "M"

4.2.3 The race committee may signal a postponement by displaying a banner bearing code flag "AP" with two sounds.

4.2.4 The race committee may signal an abandonment using sound only by sounding three shotgun blasts. This changes RRS 32.1.

5. SCHEDULE OF RACES

- 5.1 Dates and times of races and race officer duty rotation will be posted on the JYC website: www.jacksonyachtclub.com.
- 5.2 When code flag L is displayed by the signal boat as boats are finishing, it is the intent of the Race Committee to start a subsequent race as soon as possible. If one or more class flags are displayed it is the intent of the Race Committee to start a subsequent race only for those classes.
- 5.3 No more than two races will be sailed each race day.
- 5.4 Race Officer Duty Rotation: All boats (skipper and/or crew) entering the series shall serve race officer duty on a rotation established by the Race Committee Chairman and published on the JYC website.

6. CLASS FLAGS

- 6.1 The class flag for the J/22 fleet will be the J/22 class flag (red flag with white J/22 symbol).
- 6.2 The class flag for the Flying Scot fleet will be the Flying Scot class flag (white flag with the blue FS symbol).
- 6.2 The class flag for the Viper 640 fleet will be the Viper 640 class flag (white flag with red Viper symbol).
- 6.3 The class flag for any other fleets will be announced orally on the water in accordance with Instruction 3.2.

7. RACING AREA

- 7.1 The racing area will be the Ross Barnett lower lake area south and east of the clubhouse.

8. THE COURSES

8.1 Drop Mark Courses (Attachment A & B)

- 8.1.1 The diagrams in Attachment A and B show the courses, the order in which the marks are to be passed and the side on which each mark is to be left.
- 8.1.2 No later than the warning signal for each fleet the race committee will display the course to be sailed, the approximate bearing to the first mark and the length of the course to be sailed.

8.2 Fixed Mark Courses (Attachment C)

- 8.2.1 The chart in Attachment C shows the locations, bearings and distances between the fixed marks of the courses.
- 8.2.2 No later than the warning signal for each fleet the race committee will display the course to be sailed by displaying one or more of the lettered banners described in SI 4.2.2 from left to right in the order the marks of the course are to be rounded. All boats shall return to the finishing line after rounding the final mark in the displayed sequence.
- 8.2.3 When the first mark of the course is A, B, C, D or E, boats shall leave the start/finish mark described in SI 9.2.2 to starboard when starting. When the first mark of the course is M, boats shall leave the start/finish mark described in SI 9.2.2 to port when starting.

- 8.2.4 When the last mark of the course is A, B, C, D or E, boats shall leave the start/finish mark described in SI 9.2.2 to port when finishing. When the last mark of the course is M, boats shall leave the start/finish mark described in SI 9.2.2 to starboard when finishing.
- 8.2.5 When the course displayed has only one mark, boats shall round the mark to port.
- 8.2.6 When the course displayed has more than one mark, boats shall round all marks such that the mark being rounded is between the boat and the next mark of the course or the finish line, whichever is next in the course sequence.

9. MARKS

9.1 Drop Mark Courses (Attachment A & B)

- 9.1.1 Original Marks W and L will be orange tetrahedrons.
- 9.1.2 New marks, as provided in SI 12.1.2, will be yellow tetrahedrons.

9.2 Fixed Mark Courses (Attachment C)

- 9.2.1 Channel markers A, C, D and E are timber posts bearing the corresponding letter. However, Channel Marker D is mislabeled on its north side with the letter "A". Channel marker B is a floating white buoy with red vertical stripes lying between Channel markers A and C. Channel marker M is the floating lighted no-wake buoy at the entrance to the Ross Barnett Reservoir Main Harbor.
- 9.2.2 The start/finish mark will be the "NO WAKE" buoy located near the bend in the JYC Main Harbor jetty.

10. THE START

10.1 Races will be started by using RRS 26.

10.2 Drop Mark Courses (Attachment A & B)

- 10.2.1 The starting line will be between an orange staff displaying an orange flag on the race committee signal boat on the starboard end and an orange tetrahedron (Mark L) on the port end.

10.3 Fixed Mark Courses (Attachment C)

- 10.3.1 The starting line will be a line between the mast displaying the JYC burgee and the start/finish mark.

10.4 Boats whose warning signal has not been made shall avoid the starting area during the starting sequence for other races.

10.5 A boat that does not start within 5 minutes after her starting signal will be scored Did Not Start (DNS) without a hearing. This changes RRS A4 and A5.

10.6 If any part of a boat's hull, crew or equipment is on the course side of the starting line at her starting signal and she is identified, or has broken RRS 30.1, the race committee will attempt to hail her sail number. Failure to hail or to time it accurately will not be grounds for a request for redress. This changes RRS 62.1(a).

11. SHORTENING THE COURSE

11.1 Drop Mark Courses (Attachment A & B)

- 11.1.1 The race committee may shorten the course by signaling a shortened course in accordance with RRS 32. The race committee may shorten the course for one fleet only by signaling a shortened course in accordance with RRS 32 while simultaneously displaying the class flag of the fleet whose course is being shortened. In this instance, no other fleets courses are being shortened.

11.2 Fixed Mark Courses (Attachment C)

- 11.2.1 The race committee will not shorten the course for any race or any fleet.

12. CHANGE OF THE NEXT LEG OF THE COURSE

12.1 Drop Mark Courses (Attachment A & B)

- 12.1.1 The race committee will signal a change of the next leg of the course in accordance with RRS 33 except that the new direction of the leg will be verbally hailed to the competitors as they approach the mark beginning the changed leg. This changes RRS 33 (a).
- 12.1.2 To change the next leg of the course, the race committee will lay a new mark (or move the finishing line) and remove the original mark as soon as practicable. When in a subsequent change a new mark is replaced, it will be replaced by an original mark.

12.2 Fixed Mark Courses (Attachment C)

- 12.2.1 The race committee will not change the course for any race after the warning signal.

13. THE FINISH

13.1 Drop Mark Courses (Attachment A & B)

- 13.1.1 The finishing line will be between a staff displaying a blue flag on the race committee signal boat and a nearby orange or yellow tetrahedron.

13.2 Fixed Mark Courses (Attachment C)

- 13.2.1 The finishing line will be a line between the mast displaying the JYC burgee and the start/finish mark.

14. PENALTY SYSTEM

- 14.1 US Sailing prescription Appendix V Alternative Penalties will apply. This changes RRS 44.1.

15. TIME LIMITS

- 15.1 The time limit for the first boat to finish is 90 minutes.
- 15.2 If no boat has passed the first mark within 30 minutes the race shall be abandoned.
- 15.3 Boats failing to finish within 30 minutes after the first boat sails the course and finishes will be scored Did Not Finish (DNF) without a hearing. The PRO has the discretion to assign finishing places to boats prior to the expiration of this time limit. Boats choosing not to accept a PRO assigned finishing place must finish the race within the time limit. This changes RRS 35, A4 and A5.

16. PROTESTS AND REQUESTS FOR REDRESS

- 16.1 Protest forms are available in the JYC Manager's office. Protests shall be delivered to the PRO within the appropriate time limit.
- 16.2 The protest time limit is 90 minutes after the last boat has finished the last race of the day or the race committee signals no more racing today, whichever is later.

17. SCORING

- 17.1 Two boats in each class must start for a race to be scored.
- 17.2 The scoring system will be the Low Point System of RRS Appendix A.
- 17.3 Scoring Abbreviations used in Instructions 17.3.1 and 17.3.2 refer to the Scoring Abbreviations and definitions in RRS A10.
 - 17.3.1 A boat scored DNF, RET, OCS, NSC, or DSQ shall be assigned points for the finishing place one more than the number of boats that started the race. This changes RRS A5.1 and A5.2.
 - 17.3.2 A boat scored DNC or DNS shall be scored points for the finishing place two more than the number of boats that competed in the series. This changes RRS A5.1 and A5.2.
- 17.4 When racing is not abandoned for the full race day, the boat fulfilling Race Officer Duty shall be scored points for each race of the day equal to the average of all races sailed by that boat during the series (Seasonal and Annual) being scored. (Scoring Abbreviation OOD.)
- 17.5 The score for a boat that is disqualified for Gross Misconduct shall not be excludable. (Scoring Abbreviation DNE).
- 17.6 Seasonal Series Scoring
 - 17.6.1 All classes will compete in four three month long seasonal series called Winter (January-March), Spring (April-June), Summer (July-September) and Fall (October-December). These Seasonal Series for any fleet may be adjusted or combined at any time during the year by the Race Committee Chairman with the approval of the Fleet Captain.
 - 17.6.2 The number of races scored for each Seasonal Series shall be determined from the following table:

TOTAL RACES FINISHED	NUMBER OF DROP SCORES
1, 2, 3, 4	0
5	1
6	2
7	3
8, 9	4
10, 11	5
12, 13	6
14, 15	7
16, 17	8
18, 19	9
20 and more	50% of races finished in the series rounded down to the nearest whole number

17.7 Annual Series Scoring:

- 17.7.1 All classes will compete in an Annual Series consisting of all races scored in each Seasonal Series.
- 17.7.2 The number of races scored for the Annual Series shall be calculated as 75 percent of the sum of the number of races scored from the Seasonal Series rounded down to the nearest whole number.

17.8 Handicap scoring:

- 17.8.1 Boats may race and be scored under a handicap system provided two or more boats start the race. Seasonal and Annual Series may be scored at the discretion of the Race Committee Chairman.
- 17.8.2 Handicap ratings shall be the Performance Handicap Racing Fleet (PHRF) ratings and shall be determined by possession of a valid Gulf Yachting Association (GYA) PHRF rating certificate specific to the boat. In the absence of a GYA Rating Certificate, the boats rating shall be assigned by the Race Committee Chairman. Handicap ratings assigned by the Race Committee Chairman may not be protested.

- 17.9 Series Ties: If there is a series score tie between two or more boats, each boat's race scores, inclusive of dropped scores, shall be listed in order of best to worst, and at the first point(s) where there is a difference the tie shall be broken in favor of the boat(s) with the best score(s). This changes RRS A8.1.

18. SAFETY REGULATIONS

- 18.1 Boats shall check in with the race committee signal boat before the first race of the day.
- 18.2 A boat that retires from a race shall notify the race committee as soon as possible.
- 18.3 At the discretion of the PRO races may be postponed or abandoned at any time conditions are such that the race officers cannot properly perform their duties, or that their lives, the lives of participants or the property of the Yacht Club are endangered.
- 18.4 Races shall not be started if, one hour prior to the starting signal:
 - 18.4.1 The wind velocity is more than 24 knots (28 MPH).
 - 18.4.2 The heat index is 105° F or higher.
 - 18.4.3 The temperature is less than 38° F and the wind velocity is greater than 10 knots (12 MPH).
 - 18.4.5 At the discretion of the PRO, races may be started in temperatures less than 38° F when the wind velocity is less than 10 knots (12 MPH).
- 18.5 The PRO may secure weather information from the Reservoir Tower (601-992-9703) or any other reliable weather resource.

19. TRASH DISPOSAL

- 19.1 Trash shall not be thrown overboard.

20. RADIO COMMUNICATION

- 20.1 The race committee will operate on VHF Channel 68 or alternate Channel 71.

21. AWARDS

21.1 Awards will be presented at the JYC Annual Awards Banquet to:

21.1.1 The three boats with the lowest total score for each Seasonal Series.

21.1.2 The three boats with the lowest total score for the Annual Series.

21.2 Additional awards will be presented at the JYC Annual Awards Banquet for:

21.2.1 Sportsmanship.

21.2.2 Most Improved Skipper.

21.3 JYC Perpetual Awards will be presented at the JYC Annual Awards Banquet:

21.3.1 For distinction in boating: The Dick Fritz Memorial Trophy.

21.3.2 For best crew: The Jim O'Daniel Memorial Trophy.

22. DISCLAIMER OF LIABILITY

22.1 Competitors participate in the Sunday Series entirely at their own risk. See RRS 4, Decision to Race. The organizing authority will not accept any liability for material or boat damage or personal injury or death sustained in conjunction with, prior to, during or after the series.

23. FURTHER INFORMATION

23.1 Contact Race Committee Chairman, Gary Rogers, 601-214-2819 or gjrogers@a-e-r.com.

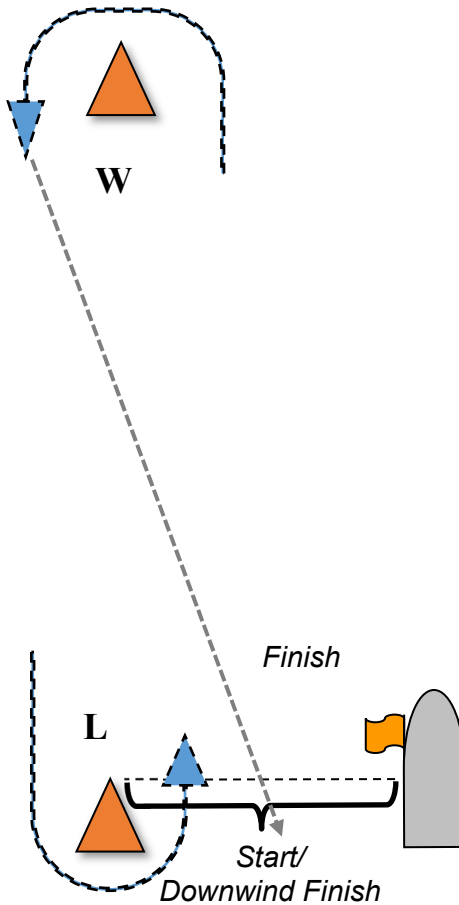
Attachment A

Drop Mark Courses

W2 & W4

Marks of the course shall be left to port

Course	Marks
W2	Start – W – Downwind Finish
W4	Start – W – L – W – Downwind Finish



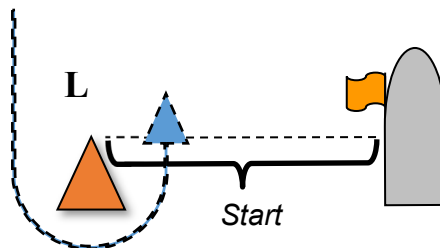
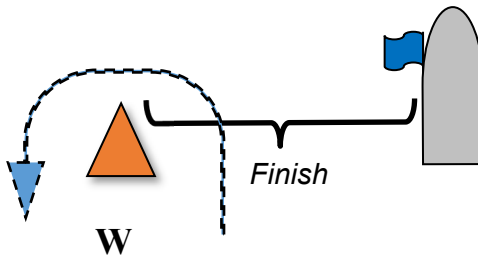
Attachment B

Drop Mark Courses

W3 & W5

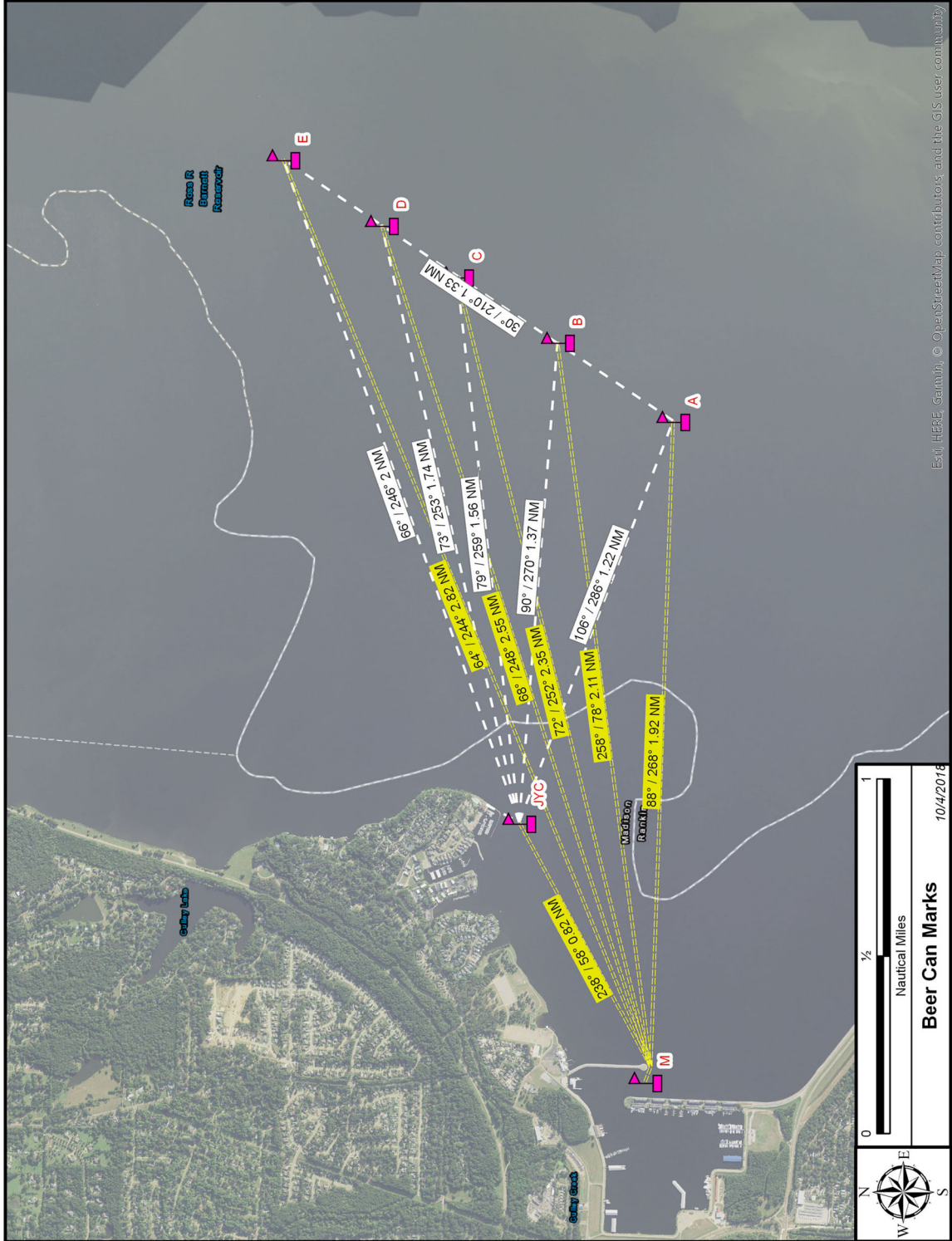
Marks of the course shall be left to port

Course	Marks
W3	Start – W – L – Upwind Finish
W5	Start – W – L – W – L – Upwind Finish



Attachment C

Fixed Mark Courses



Est. HERE, Garmin, © OpenStreetMap contributors, and the GIS user community

10/4/2018